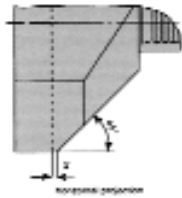
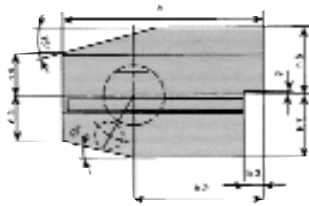
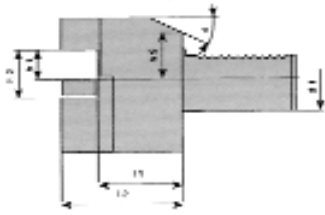


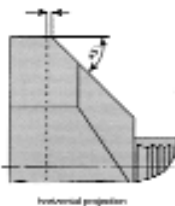
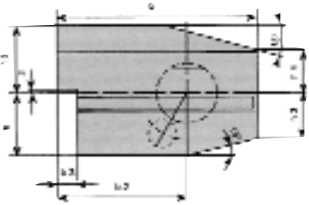
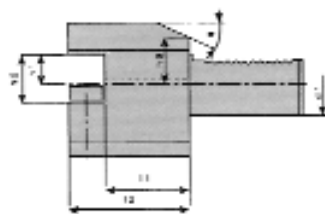
**■ B7 Turning Tool Overhead Form B7 Right Hand-Long**



Ordering No.	D1	B1	B2	B3	H1	H2	H3	H4	H6	H7	H9	L1	L2	a
VDI-16-B7	16	58	39	5	12	17	15	15	22	20	19	13	24	30°
VDI-16-B7-34	16	58	39	5	12	17	15	15	22	20	19	23	34	30°
VDI-20-B7	20	75	50	7	16	22	19	19	30	25	23	16	30	30°
VDI-20-B7-40	20	75	50	7	16	22	19	19	30	25	23	26	40	30°
VDI-30-B7	30	100	65	10	20	29	26	22	38	28	30	22	40	25°
VDI-30-B7-60	30	100	65	10	20	29	26	22	38	28	30	42	60	25°
VDI-40-B7	40	118	75.5	12.5	25	34	35	30	48	32.5	-	22	44	-
VDI-50-B7	50	130	80	16	32	41	42	35	60	35	-	30	55	-
VDI-60-B7	60	145	82.5	16	32	41	46	42.5	62.5	42.5	-	30	60	-

DIN.69880 Part 3  
VDI 3425 Sheet 2

**■ B8 Turning Tool Overhead Form B8 Left Hand-Short**



Ordering No.	D1	B1	B2	B3	H1	H2	H3	H4	H6	H7	H9	L1	L2	a
VDI-16-B8	16	58	39	5	12	17	15	15	22	20	19	13	24	30°
VDI-16-B8-34	16	58	39	5	12	17	15	15	22	20	19	23	34	30°
VDI-20-B8	20	75	50	7	16	22	19	19	30	25	23	16	30	30°
VDI-20-B8-40	20	75	50	7	16	22	19	19	30	25	23	26	40	30°
VDI-30-B8	30	100	65	10	20	29	26	22	38	28	30	22	40	25°
VDI-30-B8-60	30	100	65	10	20	29	26	22	38	28	30	42	60	25°
VDI-40-B8	40	118	75.5	12.5	25	34	35	30	48	32.5	-	22	44	-
VDI-50-B8	50	130	80	16	32	41	42	35	60	35	-	30	55	-
VDI-60-B8	60	145	82.5	16	32	41	46	42.5	62.5	42.5	-	30	60	-

DIN.69880 Part 3  
VDI 3425 Sheet 2